

## How to Migrate from In Case of Crisis Education to CrisisManager

Open the **In Case of Crisis Education** (Crisis Edu) app on your device.



Tap the banner on the main screen of your app or within any of your plans.

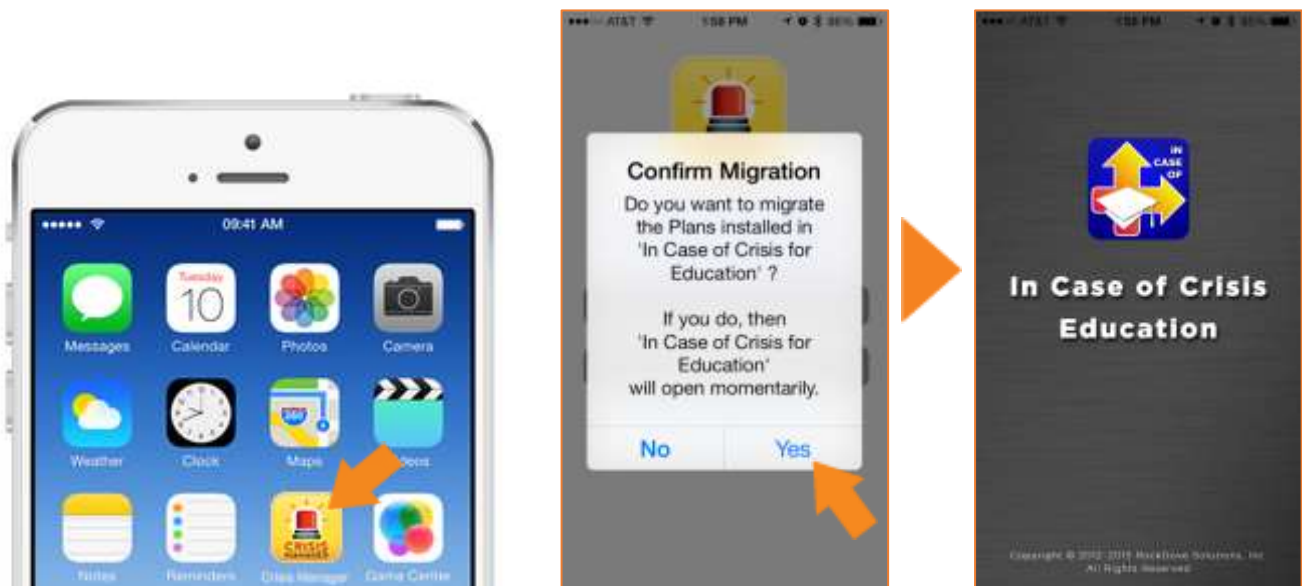


This shortcut will take you to the App Store or Google Play store to easily download the **CrisisManager** app.

You can also get there by opening the  or  and searching for **SchoolDude CrisisManager**.

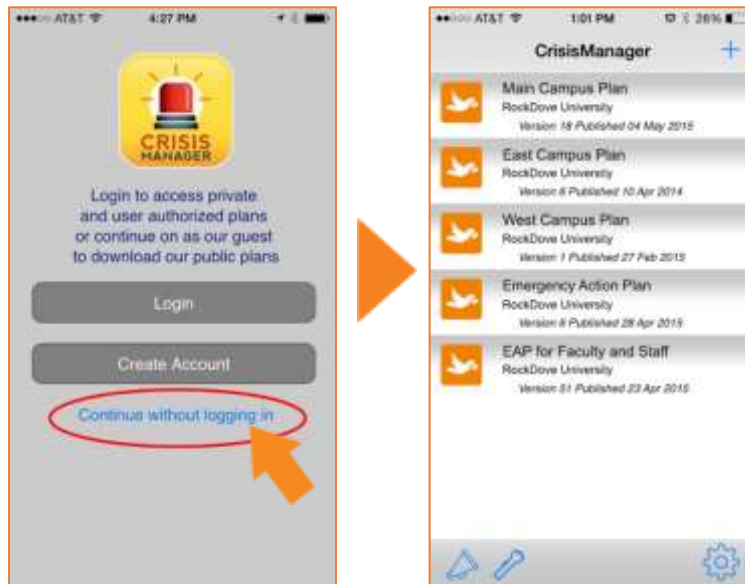


After downloading **CrisisManager**, open the app on your device, and click YES.



*In Case of Crisis Education* will open briefly to **automatically transfer your plans**.

Select "Continue without Logging in" to enter the **CrisisManager** app where their plans will be downloaded. Feel free to delete the **In Case of Crisis Education** off of your device.



**Note:** You do not have to use the banner to download CrisisManager. You can go directly to the App Store or Google Play store, and the above migration process will still take place.